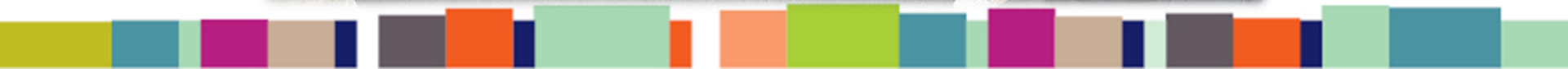


Norwegian programme

- It will be great to welcome you to Lincoln College in Sept 2026!
- Teachers and home students appreciate your presence and the cultural diversity you bring. You are a great addition to Lincoln College.



You will enjoy yourselves, too!





Lincoln College – where are we?

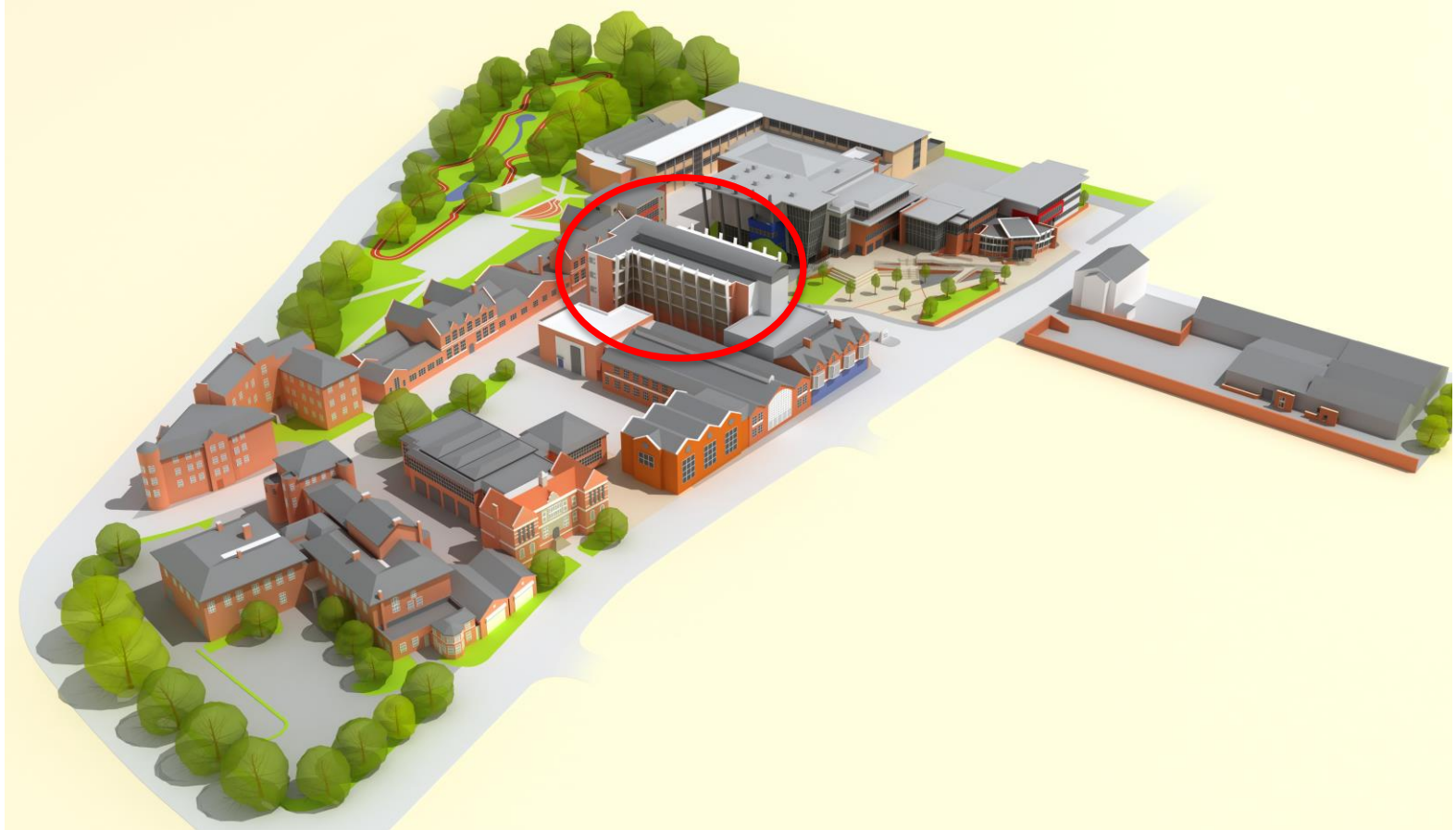


Lincoln College - general

- around 14,000 students - many part-time
- wide range of courses including university-level study.
- you will be part of an academic cohort of 200 A Level students



Lincoln College - campus



Lincoln College - our facilities

- well-stocked library and resource centre
- several places to buy food and drink including a student-run restaurant
- support provided by the International Department and Student Services



Lincoln College gym membership is included in the programme



The International Team

here to help

Rick Long

- Director of International Operations



Corinne Hills

- International Academic Coordinator
- Academic and pastoral support



The International Team

here to help

Annette Turnpenny

- International Administrator and Host Family Coordinator
- supports visa applications
- transfers in UK
- anything regarding Host Families



Dave Kirkbright

- Curriculum Lead for A-Levels
- manages the department



Subjects

Compulsory subjects

Maths; History; Foreign Language

Options (you choose 3)

Business, Biology, Chemistry, Economics,
English Language, English
Literature, Geography, History, Law,
Further Maths, Physics, Psychology,
Politics, Religious Studies and Sociology



Example timetable

Time/Day	Monday	Tuesday	Wednesday	Thursday	Friday
09.00	AS Biology A404	AS Maths C031	Norwegian History TBC	AS Chemistry A401	AS English Literature A311
09.30					
10.00					
10.30					
11.00		AS Chemistry A401	AS English Literature A311	AS Biology A404	
11.30					
12.00	AS Maths A411				
12.30					
13.00	AS Chemistry A401		AS English Literature A311	Spanish	
13.30					
14.00	AS English Literature A311	AS Biology A404		AS Maths A401	Spanish
14.30					
15.00	AS Maths A406				
15.30					
16.00					
16.30					



24 hours per week - busy!

Subject	Number of hours
History	2
Foreign Language	3
Maths	5
Option 1	5
Option 2	5
Option 3	5
Group tutorial	1



Subject Choices - choose wisely

- We understand that making choices can be clear and easy but sometimes, not so.
- Think carefully on your choices, what is right for you...not your friend group.
- **Corinne will provide an online consultation to advise and ensure you have all the information**
- No change requests until after the end of 2nd week of teaching - if it is really not working at that point, speak with Corinne.



Exams

- National exams for Maths & option subjects in May and June
- No national exams in History or foreign language.
- Usually two 90-minute exams per subject.
- You need to write by hand - quickly.
- You may be able bilingual Norwegian-English dictionary (if you use one regularly in lessons)
- You get the results in August.
- If you fail, you need to take the privatist exam in Norway.



Personal Tutor and support

- Weekly group tutorials with Corinne
- Regular 1:1 meetings about your academic performance, any worries and your personal wellbeing.
- You can also receive support from the Student Services at Lincoln College



Start & End Dates

- Term starts on Thursday 3rd September 2025
- 1 week holiday in Oct 26, Feb and May 27
- 2 weeks holiday for Christmas (19th Dec – 4th Jan)
- 2 weeks holiday for Easter (26th March – 13th Apr)
- End of term: After your last exam (usually end of May/early June) you can return home



Integration

- Most of your classes will be with UK students which is a great way to meet people.
- You will be invited to induction and welcome events
- Doing an activity outside of college is a great way to make friends e.g. music, amateur dramatics, kick boxing, football, scouts.
- We will help you to find clubs.



Healthcare



- You will register with a National Health Service doctor (a GP) a few days after you arrive.
- If you need dental care, we help you to find a dentist. You will need to pay for dental care.
- We ask you and your parents to fill out a permission form. You are asked about relevant medical information e.g. allergies which you wish to share with us & host family.

Host families



- We do our best to find you a suitable host family using information from you and from the host.
- Some host families have stricter rules than others and some Norwegian parents have stricter rules than others. Communication is paramount so that we get it right!
- If you want to be with a friend or alone in a family, we **try** to accommodate this.

Host families

- all host families are security-checked.
- many host families have been hosts for several years.
- we visit all hosts regularly to check that everything is OK.
- we listen carefully to student feedback about host families.



Host families

- Our host families are nice people who want to provide a friendly and supportive service.
- Just as students are all different, so are host families and sometimes, it just doesn't work out.
- If you are not happy in a host family and solution cannot be found, we do our very best to find you another family as soon as possible.
- **An early feedback opportunity for both students and parents after 4 weeks will be facilitated**



Host families - payment

- The daily payment to host families is £25.00
- You pay for two weeks at a time, in advance. However, some people pay monthly, by bank transfer which is much simpler.
- During holiday times, if you are away, you pay a retainer of £87.50 per week.
- No retainer charge for Christmas holidays



Host families - what you can expect

- An exchange of culture and knowledge with your family
- Your own room with a desk, a bed and storage space
- Breakfast and evening meal every day
- Wifi
- Laundry facilities
- Within a reasonable distance of the college, ideally within 8km where possible



Parental permission

- We realise that sending your 16 or 17-year-old child to a foreign country to stay with unknown people may be difficult.
- Before their arrival, there are questions you should consider e.g. Are you happy for your child to stay with another student overnight?
- Or can your daughter / son stay in a hotel with their partner?
- These permission boundaries should be shared with the host families and the college too.



Emergency contact

- Host families communicate with parents and guardians before September and during the programme.
- The college Duty Manager is on call for students, host families and parents in case of emergency evenings and weekends.
- The Duty Manager can contact the International Team if necessary.





Transport



- Most students travel by bus from their host family to college. There are discounts for multiple day tickets
- Some buy a bike or borrow one from the hosts.

Helpful links



<https://www.lincolncollege.ac.uk/>

[Student visa : Overview - GOV.UK](#)

The links below have a Higher Education bias but still have good information for international students coming to college.

[Support while you study | Study UK](#)

[Information and Advice for International Students | UKCISA](#)

College Vision 2030



VISION 2030

LINCOLN COLLEGE GROUP STRATEGY 2025-30

OUR PURPOSE *BE READY...*

**REALISE ASPIRATIONS;
SHAPE FUTURES;
SERVE OUR COMMUNITIES.**

We have a clear purpose and vision to give your daughter or son the best experience and education during their time in Lincoln

OUR CODE

Our Group Code sets the tone of how we behave and achieve our Purpose because **You Matter**.

We **CARE** deeply about achieving outcomes in the right way and expect staff and students to behave with...

COMMUNITY

We will prioritise empathy, compassion and wellbeing. Our goal is to develop a positive community where the mental and physical health of staff, learners, governors and key stakeholders is emphasised.

ACCOUNTABILITY

We will all act with integrity and transparency, take full ownership of our actions and deliver on our commitments, impacts and outcomes.

RESPECT

We will all create an inclusive environment where everyone is valued, trusted and treated with consideration, kindness and fairness.

EXCELLENCE

We will all drive innovation and pursue extraordinary quality through an "ambitious spirit", consistently striving for the highest standards in all we do.

OUR PRIORITIES

Over the next five years we will achieve "Our Purpose" by delivering on our strategic priorities set out in full detail in 7 strategic plans.

In summary we will:



The
Lincoln College
Group